

TEST CONDITIONS

Test Date	7/28/2022
Test Conductor	Travis Hayes
Boat Weight as Tested (lbs)	22450
Air Temperature (degrees F)	101
Elevation (ft)	0
Sea State	Choppy
Wind Velocity range (mph)	15
Fresh/Salt Water	Brackish
Fuel Level at Testing (gal)	350

ENGINE SPECIFICATIONS

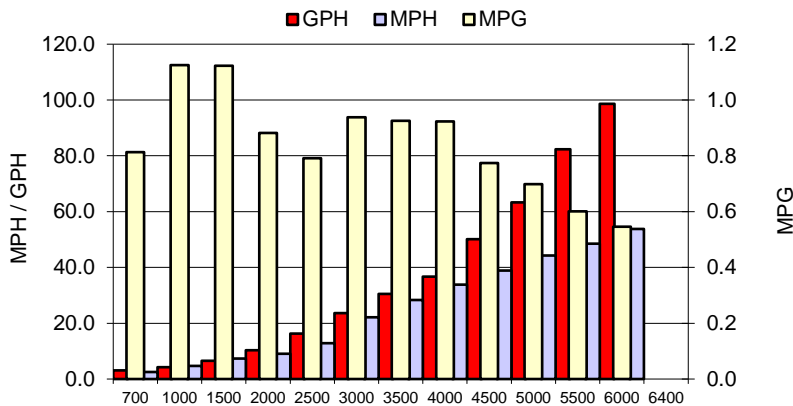
Number of Engines	2
Engine	V12 Verado
Horsepower	600
Cylinders	12
Drive or gear model and ratio	V12 AMS 2.50
Mounting Bolt Hole	1,1
Engine Height (in)	2.0,2.0
Engine Setback (in)	19.0,19.0
Engine Length (in)	20,20

PERFORMANCE SUMMARY

Top Speed (mph @ rpm)	55.3	6145
Acceleration 0 - 20 mph (seconds)	4.16	
Acceleration 0 - 30 mph (seconds)	6.58	

PROPELLER SPECIFICATIONS

Mercury Name	Verado 12
Material	Stainless Steel
Pitch	26.0,26.0
Number of Blades	4/3

PERFORMANCE CURVE

BOAT SPECIFICATIONS

Region/s sold	
Manufacturer	World Cat
Website	
Boat Model	40 DC
Boat Type	Offshore Saltwater
Material	Fiberglass
Length (ft)	39.9
Beam (ft)	12.9
Max hp Capacity	Yacht
Fuel Tank Capacity (gal)	640
Steering Type	Joystick
Dry Boat Weight (lbs)	18000

PERFORMANCE DATA

RPM	SPEED	FUEL CONSUMPTION	FUEL CONSUMPTION	RANGE
RANGE	MPH	GPH	MPG	MILES
700	2.6	3.1	0.8	520
1000	4.7	4.2	1.1	720
1500	7.3	6.5	1.1	719
2000	9.1	10.3	0.9	565
2500	12.9	16.3	0.8	506
3000	22.2	23.6	0.9	600
3500	28.3	30.5	0.9	592
4000	33.9	36.7	0.9	591
4500	38.8	50.2	0.8	496
5000	44.2	63.3	0.7	447
5500	48.6	82.3	0.6	385
6000	53.8	98.6	0.5	349
6400	0.0	0.0	0.0	0
0	0.0	0.0	0.0	0

This data is internal to Brunswick.